

**NATIONAL
DISTRIBUTOR**
**LOCAL
SERVICE**



**HANDLING
EQUIPMENT**
UK LTD

EQUIPMENT CATALOGUE



**12 MONTH
WARRANTY**

All of our products have at least 12 months onsite parts and labour warranty

THE PREMIER NAME IN MATERIALS HANDLING

Warrior Pallet Trucks P3

- ▶ WR25 Hand Pallet Truck P3
- ▶ Eco Warrior P3
- ▶ Eco Weighscale Pallet Truck P4
- ▶ Premium Weighscale Pallet Truck P4
- ▶ Rough Terrain Pallet Truck P5
- ▶ Low-Profile Hand Pallet Truck P5
- ▶ Extra-Long Pallet Truck P6
- ▶ Workhorse Pallet Truck P6
- ▶ Galvanised Semi-Stainless Steel Pallet Truck P7
- ▶ Stainless Steel Pallet Truck P7

Warrior High-Lift Pallet Trucks P8

- ▶ Manual High-Lift Pallet Truck P8
- ▶ Electric High-Lift Pallet Truck P8

Warrior Work Positioners P9

- ▶ Work Positioners M200 & E100A P9
- ▶ Work Positioner MES150 P9

Warrior Stackers P10

- ▶ MiniStacker P10
- ▶ Light-Duty Counterbalanced Stacker P10
- ▶ Manual Stacker P11
- ▶ Manual Stacker with Adjustable Forks P11

Warrior Lift Tables P12

- ▶ Eco Manually-Operated Mobile Lift Table P12
- ▶ Premium Manually Operated Mobile Lift Tables P13
- ▶ Auto Pallet Leveller WRSP360 - 2000 P14
- ▶ Static Mains-Operated Lift Tables P15

Warrior Drum Handling P18

- ▶ Drum Porter P18
- ▶ Drum Porter Override P18
- ▶ Drum Porter Plus P19
- ▶ Straddle-Leg Drum Truck P19
- ▶ Steel and Plastic Drum Tippler P20
- ▶ Automatic Fork-Mounted Drum Clamps P21
- ▶ Drum Tipper P22

Warrior Fork Extensions P23

- ▶ Fork Extensions P23

Warrior Counterbalanced Cranes P24

- ▶ Manual Counterbalanced Crane P24
- ▶ Pedestrian-Operated Powered Counterbalanced Floor Crane P25
- ▶ Electric Slewing Fully Powered Counterbalanced Workshop Crane P26
- ▶ Semi-Electric Counterbalanced Workshop Crane P27
- ▶ Heavy-Duty Semi-Electric Workshop Crane P28

Warrior Order Pickers P29

- ▶ Electric Order Picker P29

EP Equipment Forklift Trucks P30

- ▶ EFL201 – Li-ion Electric Forklift Truck (2.0T) P30
- ▶ EFL252X2 – Electric Counterbalance Forklift Truck (2.5T) P31
- ▶ CPD15/18/20 TVL – Li-ion Three-Wheel Counterbalance Forklift (1.5T, 1.8T, 2.0T) P32
- ▶ EFL302X4 – Li-ion Electric Forklift (3.0T) P33
- ▶ EFL253/303/353 – Li-ion Electric Forklift Truck (2.5T, 3.0T, 3.5T) P34
- ▶ EFLXZ301 – Remanufactured Electric Forklift Truck (3.0T) P35
- ▶ CPD50L1 – Li-ion Counterbalance Forklift (5.0T) P36

EP Equipment Li-ion Pallet Trucks P37

- ▶ F4 – Li-ion Pallet Truck (1.5T) P37
- ▶ WPL202 – Li-ion Electric Pedestrian Pallet Truck (2.0T) P37
- ▶ RPL201 – Li-ion Ride-On Pallet Truck (2.0T) P38

EP Equipment Li-ion Stackers P38

- ▶ ESL122 – Li-ion Electric Pallet Stacker (1.2T) P38
- ▶ WSA161 – Li-ion Electric Pallet Stacker (1.6T) P39
- ▶ ESA121-D – Li-ion Electric Pedestrian Straddle Stacker (1.2T) P39
- ▶ RSC082/122/152 – Li-ion Ride-On Pallet Stacker (0.8T, 1.2T, 1.5T) P40

EP Equipment Li-ion Reach Trucks P40

- ▶ CQE15S – Li-ion Ride-On Reach Truck (1.5T) P40
- ▶ CQD14/16/20LB – Li-ion Reach Truck (1.4T, 1.6T, 2.0T) P41

EP Equipment Cobots P41

EP Equipment Li-ion Order Pickers P42

- ▶ JX0 – Li-ion Small-Volume Order Picker P42
- ▶ JX1 – Li-ion High-Volume Order Picker P42

About Us, Aftersales and Service P43

WARRIOR WR25 Hand Pallet Truck

2500kg

Colour may vary depending on availability

TNN = Tandem Rollers (80 x 70mm)

SNN = Single Rollers (80 x 93mm)



- ▶ Long-life nylon or polyurethane rollers and steer wheels as standard

- ▶ 3-position trigger

- ▶ Full bushing in key areas

- ▶ Greasing points

- ▶ Overload/Pressure relief valve

- ▶ Sealed hydraulics

- ▶ Exit/Entry rollers

MODEL	CAPACITY (KG)	FORK DIMENSIONS (MM) (L X W)	LOWERED FORK HEIGHT (MM)	RAISED FORK HEIGHT (MM)	STEERING WHEEL DIMENSIONS (MM)
WR25VS80	2500	800 x 450	85	200	200 x 50
WR25VS90	2500	900 x 450	85	200	200 x 50
WR25S100	2500	1000 x 540	85	200	200 x 50
WR25S115	2500	1150 x 540	85	200	200 x 50
WR25L100	2500	1000 x 685	85	200	200 x 50
WR25L115	2500	1150 x 685	85	200	200 x 50
WR25S122	2500	1220 x 540	85	200	200 x 50
WR25L122	2500	1220 x 685	85	200	200 x 50

WARRIOR Eco Warrior

Single/Tandem Rollers 1150 x 540mm

3000kg

Colour may vary depending on availability



WARRIOR CE

MODEL	CAPACITY (KG)	FORK DIMENSIONS (MM) (L X W)	LOWERED FORK HEIGHT (MM)	RAISED FORK HEIGHT (MM)	STEERING WHEEL DIMENSIONS (MM)
WR30S115TNN	3000	1150 x 540	85	200	200 x 50
WR30L115TNN	3000	1150 x 685	85	200	200 x 50

WARRIOR Eco Weighscale Pallet Truck

The **WARRIOR ECO WEIGHSCALE HAND PALLET TRUCK** is an excellent, economic solution for weighing pallets, with a capacity of up to 2000kg

- ▶ Measures in 5kg increments
 - ▶ Zero and Total Weight functions
 - ▶ High-contrast display
 - ▶ High battery autonomy – 3000 uses per set of batteries
 - ▶ Splash-proof to norm IP65
 - ▶ Auto-shutoff after two minutes of inactivity
 - ▶ Tandem polyurethane rollers
- ▶ 0-500kg = +/-10kg accuracy
 - ▶ 500-1000kg = +/-20kg accuracy
 - ▶ 1000-2000kg = +/-30kg accuracy

MODEL	FORK DIMENSIONS (MM)	CAPACITY (KG)
WRESE20S115TPP	1150 x 540	2000



WRESE20S115TPP



WARRIOR CE

WARRIOR Premium Weighscale Hand Pallet Truck



- ▶ Measures in 1kg increments
- ▶ +/-0.1% accuracy
- ▶ Polyurethane wheels and rollers, reducing vibration
- ▶ Totalising function
- ▶ High-contrast display
- ▶ High battery autonomy with 70 hours of use
- ▶ Water and dust proof to norm IP65
- ▶ 6V/4.0Ah battery and external charger

MODEL	WRBFW20S	WRBFW20L
CAPACITY (KG)	2000	2000
FORK DIMENSIONS (MM)	1150 X 540	1220 X 680
LOWERED FORK HEIGHT (MM)	85	85
RAISED FORK HEIGHT (MM)	165	165
STEERING WHEEL DIMENSIONS (MM)	180 X 50	180 X 50
NET WEIGHT (KG)	75	75

WARRIOR CE



WARRIOR Rough Terrain Pallet Truck

For sites with uneven, rough terrain underfoot, a standard pallet truck will not be suited to the job. The **WARRIOR ROUGH TERRAIN PALLET TRUCK** is mounted on large pneumatic tyres – sturdy enough to ride over undulating surfaces. With a substantial capacity of 1200kg and a 1277mm inside straddle width, this truck will suit most pallet configurations.

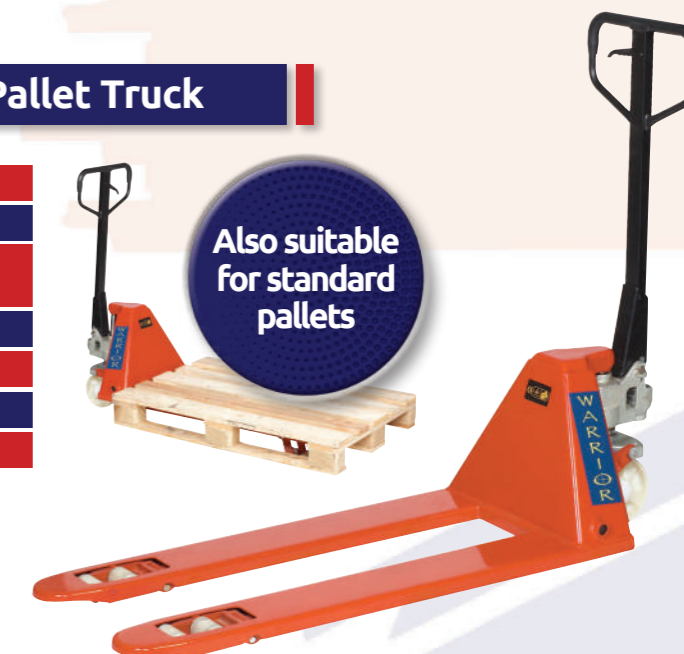
CAPACITY	1200KG
LOAD CENTRE	450MM
OVERALL WIDTH	1605MM
INSIDE STRADDLE WIDTH	1277MM
OVERALL LENGTH	1375MM
OVERALL HEIGHT	1200MM
FORK LENGTH	860MM
ADJUSTABLE FORKS	212 - 735MM
FORK WIDTH	100MM
LOWERED FORK HEIGHT	63MM
LIFT HEIGHT	233MM
FRONT LOAD WHEEL	Ø 550 x 132MM
STEERING WHEEL	Ø 265 x 80MM
WEIGHT	225KG



WARRIOR CE

WARRIOR Low-Profile Hand Pallet Truck

- ▶ Sealed bearings and hydraulics
- ▶ 3-position trigger
- ▶ Suitable for crates, American and Japanese pallets as well as standard pallets
- ▶ Greasing points
- ▶ Overload/Pressure relief valve
- ▶ Self-lubricating brushes
- ▶ Tandem nylon rollers and nylon steer wheels



WARRIOR CE

MODEL	CAPACITY (KG)	FORK DIMENSIONS (MM)	LOWERED FORK HEIGHT (MM)	RAISED FORK HEIGHT (MM)	STEERING WHEEL DIMENSIONS (MM)	NET WEIGHT (KG)
WRL0W51S	2000	1150 x 540	51	165	180 x 50	75
WRL0W51L	2000	1150 x 685	51	165	200 x 50	75



WARRIOR Extra-Long Pallet Truck

- ▶ Long-life nylon or polyurethane rollers and nylon steer wheels as standard
- ▶ 3-position trigger
- ▶ Full bushing in key areas
- ▶ Greasing points
- ▶ Overload/Pressure relief valve
- ▶ Sealed hydraulic
- ▶ Exit/Entry rollers

WARRIOR CE



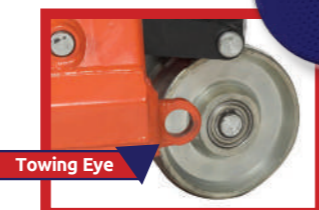
MODEL	WRL20LEELFTNN	WRL20LNQEELFTNN	WRL20LELFTNN	WRL20SEELFTNN	WR20SNQEELFTNN	WR20SELFTNN	WR35LEELFTNN	WRL35LNQEELFTNN	WRL35SEELFTNN	WRL35SNQEELFTNN
CAPACITY (KG)	2000	2000	2000	2000	2000	2000	3500	3500	3500	3500
FORK DIMENSIONS (MM) (L X W)	2000 X 685	1800 X 685	1500 X 685	2000 X 540	1800 X 540	1500 X 540	2500 X 685	2000 X 685	2500 X 540	2000 X 540
LOWERED FORK HEIGHT (MM)	85	85	85	85	85	85	85	85	85	85
RAISED FORK HEIGHT (MM)	200	200	200	200	200	200	200	200	200	200
STEERING WHEEL DIMENSIONS (MM)	200 X 50	200 X 50	200 X 50	200 X 50	200 X 50	200 X 50	200 X 50	200 X 50	200 X 50	200 X 50

WARRIOR Workhorse Pallet Truck

Designed to make light work of tougher applications, with a substantial 5000kg load capacity

- ▶ Sealed bearings and hydraulics
- ▶ 3-position trigger
- ▶ Full bushing in key areas
- ▶ Greasing points
- ▶ Overload/Pressure relief valve
- ▶ Self lubricating brushes
- ▶ Sealed hydraulics
- ▶ Exit/Entry rollers
- ▶ Steel wheels

5000kg



WR50S



MODEL	CAPACITY (KG)	FORK DIMENSIONS (MM)	LOWERED FORK HEIGHT (MM)	RAISED FORK HEIGHT (MM)	STEERING WHEEL DIMENSIONS (MM)	LOAD ROLLER DIMENSIONS (MM)	NET WEIGHT (KG)
WR50S	5000	1150 X 580	90	200	200 X 50	80 X 68	140



WARRIOR Galvanised Semi-Stainless Steel Pallet Truck

- ▶ Chrome-plated hydraulic lift ram and valve
- ▶ Fully galvanised mainframe and forks
- ▶ Fully sealed hydraulic, nickel-coated pump – no atmosphere contaminates in hydraulics
- ▶ Nylon Rollers

MODEL	CAPACITY (KG)	FORK DIMENSIONS (MM)	LOWERED FORK HEIGHT (MM)	RAISED FORK HEIGHT (MM)	STEERING WHEEL DIMENSIONS (MM)	LOAD ROLLER DIMENSIONS (MM)	NET WEIGHT (KG)
WRZ20HS115TNN	2000	1150 X 540	85	200	Ø 200 X 50	Ø 80 X 70	75
WRZ20HL115TNN	2000	1150 X 685	85	200	Ø 200 X 50	Ø 80 X 70	75

WARRIOR CE



316 Stainless

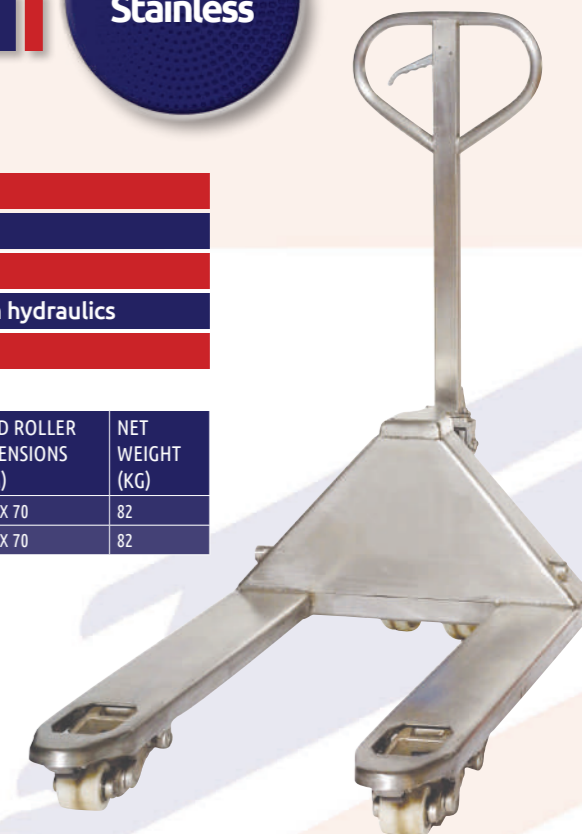
WARRIOR Stainless Steel Pallet Truck

Ideal for environments where hygiene is paramount.

- ▶ Chrome-plated hydraulic lift ram and valve
- ▶ Easy-clean surface
- ▶ Stainless mainframe, pump, handle, bearings, pins and chains
- ▶ Fully sealed hydraulic, nickel-coated pump – no atmosphere contaminates in hydraulics
- ▶ Nylon Rollers

MODEL	CAPACITY (KG)	FORK DIMENSIONS (MM)	LOWERED FORK HEIGHT (MM)	RAISED FORK HEIGHT (MM)	STEERING WHEEL DIMENSIONS (MM)	LOAD ROLLER DIMENSIONS (MM)	NET WEIGHT (KG)
WRS20HS115TNN	2000	1150 X 540	85	200	Ø 200 X 50	Ø 80 X 70	82
WRS20HL115TNN	2000	1150 X 685	85	200	Ø 200 X 50	Ø 80 X 70	82

WARRIOR CE



WARRIOR Manual High-Lift Pallet Truck

- Adjustable stabilisers
- Overload/Pressure relief valve
- Self-lubricating brushes
- Sealed hydraulic system
- Single nylon rollers
- Quicklift below 250kg

WARRIOR HIGH-LIFT PALLET TRUCKS are designed for use with open-bottomed pallets, and are intended to ease the physical strain of lifting tasks. With a higher lift height than standard pallet trucks, high-lift trucks elevate loads to optimal working heights for your team, well-suited for use as a work bench or at the end of production lines.



MODEL	CAPACITY (KG)	FORK DIMENSIONS (MM)	LOWERED FORK HEIGHT (MM)	RAISED FORK HEIGHT (MM)	STEERING WHEEL DIMENSIONS (MM)	LOAD ROLLER DIMENSIONS (MM)	NET WEIGHT (KG)
WR10540	1000	1170 x 540	85	800	Ø 180 x 50	Ø 75 x 50	75
WR10680	1000	1170 x 685	85	800	Ø 180 x 50	Ø 75 x 50	75

WARRIOR Electric High-Lift Pallet Truck

- Adjustable stabilisers
- Overload/Pressure relief valve
- Self-lubricating brushes
- Sealed hydraulic system
- Single nylon rollers
- 0.8kW lifting motor
- 12V/6Ah sealed gel battery and built-in charger

Elevate your workplace safety and uplift your team with a **WARRIOR ELECTRIC HIGH-LIFT PALLET TRUCK**, engineered to reduce strain injury and provide a high-lift solution where standard pallet trucks will not suffice.



MODEL	CAPACITY (KG)	FORK DIMENSIONS (MM)	LOWERED FORK HEIGHT (MM)	RAISED FORK HEIGHT (MM)	STEERING WHEEL DIMENSIONS (MM)	LOAD ROLLER DIMENSIONS (MM)	BATTERY	NET WEIGHT (KG)
WRACX-10E	1000	1170 x 540	85	800	Ø 180 x 50	Ø 75 x 50	12V/60AH	75
WRACX-10EW	1000	1170 x 680	85	800	Ø 180 x 50	Ø 75 x 50	12V/60AH	75

WARRIOR Work Positioners

- Compact, light and manoeuvrable
- Self-sustaining winch
- Autobrake system to prevent uncontrolled lowering
- Mounted on 4 swivel castors

OPTIONAL EXTRAS

- V Block
- Double Spindle (E100A)
- Reel Rotator (E100A)

MODEL	CAPACITY (KG)	LOAD CENTRE (MM)	MINIMUM HEIGHT (MM)	MAXIMUM HEIGHT (MM)	PLATFORM SIZE (MM)	STEERING WHEEL DIMENSIONS (MM)	LOAD ROLLER DIMENSIONS (MM)	OVERALL DIMENSIONS (MM)
WRM200	200	235	130	1500	470 X 600	Ø 125	Ø 75	870 X 600 X 1920
WRE100A	100	235	130	1700	470 X 600	Ø 125	Ø 75	870 X 600 X 1790



WARRIOR Work Positioner

- Battery-operated
- Mounted on 4 polyurethane swivel castors, with two braked
- Supplied complete with 12V/7Ah battery and charger

MODEL	CAPACITY (KG)	MINIMUM HEIGHT (MM)	MAXIMUM HEIGHT (MM)	PLATFORM SIZE (MM)	FRONT WHEEL DIMENSIONS (MM)	REAR WHEEL DIMENSIONS (MM)	OVERALL DIMENSIONS (MM)
WRMES150	150	130	1420	470 X 600	Ø 75 X 32	Ø 100 X 32	880 X 520 X 1928

MES150



WARRIOR CE

WARRIOR MiniStacker

Where a large industrial stacker is not required but the load cannot be moved by hand, a **WARRIOR MINISTACKER** provides a compact, light-duty solution.



- ▶ Smooth-operating foot pump
- ▶ Braked for extra safety
- ▶ Smart chromium-plated frame
- ▶ Position lifting

MODEL	CAPACITY (KG)	PLATFORM DIMENSIONS (MM)	RAISED PLATFORM HEIGHT (MM)	LOWERED PLATFORM HEIGHT (MM)	STEERING ROLLER DIMENSIONS (MM)	LOAD ROLLER DIMENSIONS (MM)	SIZE OF FORKS (MM)	NET WEIGHT (KG)
WR0485	400	650 X 576	850	85	Ø 127 X 40	Ø 75 X 40	650 X 110	75
WR0412	400	650 X 576	1200	85	Ø 127 X 40	Ø 75 X 40	650 X 110	81
WR0415	400	650 X 576	1500	85	Ø 127 X 40	Ø 75 X 40	650 X 110	91

WARRIOR Light-Duty Counterbalanced Stacker

The **WARRIOR LIGHT-DUTY COUNTERBALANCED STACKER** is designed to tackle loads of up to 250kg – ideal for lighter loads and lifting tasks around your site. Semi-electric and engineered with a counterbalance, this machine requires minimal maintenance and promises a long service life.

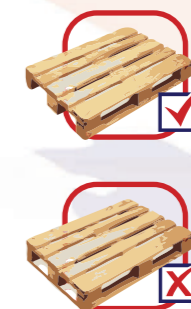


- ▶ Lightweight
- ▶ Semi-electric engineering with built-in charger
- ▶ Ergonomic design, ideal for indoor use
- ▶ Footbrake

MODEL	CAPACITY (KG)	MAXIMUM FORK HEIGHT (MM)	MINIMUM FORK HEIGHT (MM)	OVERALL DIMENSIONS (MM) (L X W X H)	ADJUSTABLE FORK WIDTH (MM)	BATTERY	POWER	NET WEIGHT (KG)
WRM200	250	1200	50	1500 X 720 X 1440	215-550	12V/60AH	DC12V/800W	225

WARRIOR Manual Stacker

Discover a cost-effective handling solution, constructed with high-quality materials offering unmatched durability and value.

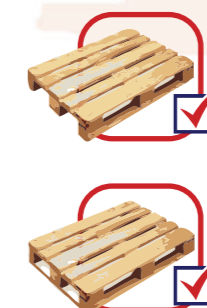


- ▶ Pulling handle
- ▶ Braked with steer wheel foot guards
- ▶ Tandem lift chains
- ▶ Manual lift and travel
- ▶ Adjustable forks
- ▶ Suitable for Euro pallets

MODEL	CAPACITY (KG)	LOAD CENTRE (MM)	MAXIMUM FORK HEIGHT (MM)	MINIMUM FORK HEIGHT (MM)	FORK DIMENSIONS (MM)	ADJUSTABLE FORK WIDTH (MM)	NET WEIGHT (KG)	GROUND CLEARANCE (MM)	OVERALL DIMENSIONS (MM) (L X W X H)
WRVFS1016	1000	500	1600	85	1150 x 140	300-800	184	20	1488 x 850 x 2100
WRVFS1030	1000	500	3000	85	1150 x 140	300-740	332	23	1496 x 800 x 2060

WARRIOR Manual Straddle Stacker with Adjustable Forks

- ▶ Pulling handle
- ▶ Braked with steer wheel foot guards
- ▶ Tandem lift chains
- ▶ Manual lift and travel
- ▶ Adjustable fork widths
- ▶ Adjustable straddle



WARRIOR CE

MODEL	CAPACITY (KG)	MAXIMUM FORK HEIGHT (MM)	MINIMUM FORK HEIGHT (MM)	FORK LENGTH (MM)	ADJUSTABLE FORK WIDTH (MM)	NET WEIGHT (KG)	MINIMUM TURNING RADIUS (MM)	OVERALL DIMENSIONS WITH WIDEST FORKS (MM) (L X W X H)	OUTER DIAMETER FRONT WHEEL (MM)	OUTER DIAMETER REAR WHEEL (MM)
WRMSS1016	1000	1600	75	1150	210-800	325	1250	1580 x 1360 x 2020	80	150
WRMSS1025	1000	2500	75	1150	210-800	360	1650	1480 x 1360 x 1770	80	150
WRMSS1030	1000	3000	75	1150	210-800	385	1650	1480 x 1360 x 2020	80	150

WARRIOR Eco Manually Operated Mobile Lift Table

Designed to withstand the wear-and-tear of modern operations, even the most trying tasks.

- ▶ High-quality hydraulics with a positive feel
- ▶ Foot-operated lift
- ▶ Infinitely controlled lowering mechanism
- ▶ High pushing handle
- ▶ Two fixed wheels and two swivel castors, fitted with brake and foot guards

WARRIOR CE



Eco Range

MODEL	CAPACITY (KG)	LOWERED TABLE HEIGHT (MM)	RAISED TABLE HEIGHT (MM)	TABLE DIMENSIONS (MM) (W X L)	HANDLE HEIGHT (MM)	WHEEL DIAMETER (MM)	STROKES TO FULL HEIGHT	SCISSORS TYPE	NET WEIGHT (KG)
WR15	150	220	720	450 x 700	950	100	28	SINGLE	46
WR30	300	285	880	500 x 850	990	125	27	SINGLE	74
WR50	500	285	880	500 x 850	990	125	27	SINGLE	81
WR50L	500	290	915	810 x 1600	975	125	55	SINGLE	154
WR75	750	420	990	510 x 1000	990	147	45	SINGLE	125
WR100	1000	380	990	510 x 1016	990	147	82	SINGLE	140
WR100L	1000	360	1360	750 x 2035	1000	180/80	200	SINGLE	198
WR35D	350	335	1300	500 x 910	975	125	53	DOUBLE	105
WR70D	700	445	1500	610 x 1220	1015	125	97	DOUBLE	195

WARRIOR Premium Manually Operated Mobile Lift Tables

- ▶ High-quality hydraulics with a positive feel
- ▶ Foot-operated lift
- ▶ Infinitely controlled lowering mechanism
- ▶ High pushing handle
- ▶ Castors fitted with foot brakes and guarding
- ▶ Fully mobile on 2 swivel and 2 fixed castors
- ▶ Fitted with 2 maintenance stops and an overload valve

WARRIOR CE



Premium Range

MODEL	CAPACITY (KG)	LOWERED TABLE HEIGHT (MM)	RAISED TABLE HEIGHT (MM)	TABLE DIMENSIONS (MM) (L X W)	HANDLE HEIGHT (MM)	WHEEL DIAMETER (MM)	STROKES TO FULL HEIGHT	SCISSORS TYPE	NET WEIGHT (KG)
WRBS15	150	265	755	700 x 450	1000	100	16	SINGLE	41
WRBS25	250	330	910	830 x 500	1100	125	25	SINGLE	78
WRBS50	500	435	1000	1010 x 520	1130	150	44	SINGLE	118
WRBS50L	500	400	1100	1525 x 620	1130	150	70	SINGLE	175
WRBS50LB	500	370	1190	1200 x 800	1030	160	80	SINGLE	160
WRBS75	750	442	1000	1010 x 520	1130	150	55	SINGLE	120
WRBS100	1000	445	950	1010 x 520	1130	150	75	SINGLE	137
WRBS100L	1000	425	1225	1200 x 800	1130	150	85	SINGLE	163
WRBS30D	300	435	1585	1010 x 520	1130	150	75	DOUBLE	150
WRBS50D	500	440	1575	1010 x 520	1130	150	75	DOUBLE	168
WRBS80D	800	470	1410	1010 x 520	1130	150	80	DOUBLE	165

WARRIOR Auto Pallet Leveller WRSP360 - 2000

The **WARRIOR AUTO PALLET LEVELLER** is an innovative power-free, self-levelling platform – ideal for use as both a lift table and work positioner. With an easy-change spring system, you can adjust your combination to accommodate loads from 200-2000kg, automatically positioning items and pallets to avoid physical strain.

Featuring fork pockets and a rotating table, discover a comprehensive solution to elevating your operations.

Optional levelling feet and safety skirt available. Please get in touch for further details.

Please note that we will require your load parameters when taking your order.



Optional
Stabilising
Feet

Optional
Skirt



Scan for Video

MODEL	MAXIMUM CAPACITY (KG)	LOWERED TABLE HEIGHT (MM)	RAISED TABLE HEIGHT (MM)	OVERALL DIMENSIONS (MM)	ROTATING TURNTABLE DIAMETER (MM)	NET WEIGHT (KG)
WRSP360-2000	2000	241	705	1422 X 1270 X 1829	1107	173



WARRIOR CE



WARRIOR Static Mains-Operated Low-Profile Lift Tables

Available in two specialised designs, the **WARRIOR STATIC MAINS-OPERATED LOW-PROFILE LIFT TABLES** include a remote power system, which is incredibly easy to control and convenient for maintenance. The WRSLPU10 model in particular is designed with a distinctive U-shape, perfect for handling pallets and boxes.

MODEL	WRSLPU10	WRSLPFT10
CAPACITY (KG)	1000	1000
LOWERED HEIGHT (MM)	80	82
RAISED HEIGHT (MM)	760	760
PLATFORM SIZE (MM)	1450 x 1140	1450 x 1140
LIFTING TIME	18 SECONDS	18 SECONDS
LIFT SPEED WITH LOAD (MM/SEC)	42	42
LOWERING SPEED WITH LOAD (MM/SEC)	48	48
MOTOR	0.75KW	0.75KW
NET WEIGHT (KG)	235	250
FEATURES	1050 x 585MM CUT-OUT	1140 x 890MM RAMP

WRSLPU10



WRSLPFT10



WARRIOR CE



WARRIOR Static Heavy-Duty Mains-Operated Lift Tables

These lift tables can be either floor or pit-mounted, and offer lift heights of up to 1780mm to ease the physical strain associated with lifting tasks. Featuring fully interlocked arrestors and an emergency check valve, these tables ensure a safe, comfortable operating experience.

WARRIOR CE

WRHD2000



Safety Trip Bar

MODEL	WRSLT10	WRSLT20	WRSLT30	WRHD2000
CAPACITY (KG)	1000	2000	3000	2000
LOWERED HEIGHT (MM)	190	190	220	360
RAISED HEIGHT (MM)	1010	1010	1020	1780
PLATFORM SIZE (MM) (L X W)	1300 x 800	1300 x 800	1300 x 800	1300 x 850
LIFTING TIME	25 SECONDS	40 SECONDS	26 SECONDS	40 SECONDS
LOWERING TIME	20 SECONDS	30 SECONDS	22 SECONDS	35 SECONDS
MOTOR	0.75KW	0.75KW	1.50KW	2.2KW
NET WEIGHT (KG)	220	280	320	295
POWER	380V, 3-PHASE POWER	380V, 3-PHASE POWER	380V, 3-PHASE POWER	

WARRIOR Static Heavy-Duty Mains-Operated Lift Tables

MODEL	CAPACITY (KG)	LOWERED HEIGHT (MM)	RAISED HEIGHT (MM)	PLATFORM SIZE (MM) (W X L)	BASE FRAME SIZE (MM)	LIFT TIME (SECS)	POWER PACK	NET WEIGHT (KG)
WRHW1001	1000	205	1000	820 x 1300	640 x 1240	20-25	380V/50HZ, AC1.1KW	160
WRHW1002	1000	205	1000	1000 x 1600	640 x 1240	20-25	380V/50HZ, AC1.1KW	186
WRHW1003	1000	240	1300	850 x 1700	640 x 1580	30-35	380V/50HZ, AC1.1KW	200
WRHW1004	1000	240	1300	1000 x 1700	640 x 1580	30-35	380V/50HZ, AC1.1KW	210
WRHW1005	1000	240	1300	850 x 2000	640 x 1580	30-35	380V/50HZ, AC1.1KW	212
WRHW1006	1000	240	1300	1000 x 2000	640 x 1580	30-35	380V/50HZ, AC1.1KW	223
WRHW2001	2000	230	1050	850 x 1300	785 x 1220	20-25	380V/50HZ, AC1.5KW	235
WRHW2002	2000	230	1050	1000 x 1600	785 x 1220	20-25	380V/50HZ, AC1.5KW	268
WRHW2003	2000	250	1300	850 x 1700	785 x 1600	25-35	380V/50HZ, AC1.5KW	289
WRHW2004	2000	250	1300	1000 x 1700	785 x 1600	25-35	380V/50HZ, AC1.5KW	300
WRHW2005	2000	250	1300	850 x 2000	785 x 1600	25-35	380V/50HZ, AC1.5KW	300
WRHW2006	2000	250	1300	1000 x 2000	785 x 1600	25-35	380V/50HZ, AC1.5KW	315
WRHW4001	4000	240	1100	1200 x 1700	900 x 1600	30-40	380V/50HZ, AC2.2KW	375
WRHW4002	4000	240	1100	1200 x 2000	900 x 1600	30-40	380V/50HZ, AC2.2KW	405
WRHW4003	4000	300	1400	1000 x 2000	900 x 2000	45-50	380V/50HZ, AC2.2KW	470
WRHW4004	4000	300	1400	1200 x 2000	900 x 2000	45-50	380V/50HZ, AC2.2KW	490
WRHW4005	4000	300	1400	1000 x 2200	900 x 2000	45-50	380V/50HZ, AC2.2KW	480
WRHW4006	4000	300	1400	1200 x 2200	900 x 2000	45-50	380V/50HZ, AC2.2KW	505
WRHW4007	4000	300	1400	1500 x 1700	1200 x 1600	45-50	380V/50HZ, AC2.2KW	420
WRHW4008	4000	300	1400	1800 x 2200	1500 x 2000	45-50	380V/50HZ, AC2.2KW	540



WARRIOR Drum Porter

This user-friendly drum handler offers easy drum lifting, handling and lowering, with minimal strain on the operator. Highly manoeuvrable and lightweight, the **WARRIOR DRUM PORTER** elevates 210-litre steel drums from the floor for transportation, with smooth lowering afforded by a spring return knob.

- ▶ Manual hydraulic operation by hand-operated pump unit
- ▶ Infinitely controlled 'dead man' hand release wheel
- ▶ High push/pull handlebar
- ▶ Fitted with overload valve and parking brake as standard
- ▶ Polyurethane tyres and swivel wheels
- ▶ Suitable for steel drums

MODEL	WRDT250
LIFT HEIGHT (MM)	345
MAXIMUM HEIGHT IN LOWERED POSITION (MM)	1000
MAXIMUM HEIGHT IN RAISED POSITION (MM)	1215
MAXIMUM DRUM DIAMETER (MM)	572
MAXIMUM DRUM HEIGHT (MM)	915
LIFTING PER STROKE (MM)	22
OVERALL LENGTH (MM)	810
OVERALL WIDTH (MM)	800
NET WEIGHT (KG)	42

WARRIOR CE



WARRIOR Drum Porter Override

The **WARRIOR DRUM PORTER OVERRIDE** enables the passing of drums over an 800mm wide pallet with exceptional manoeuvrability, with its wide straddle and cantilevered frame.

- ▶ Manual hydraulic operation by hand-operated pump unit
- ▶ Infinitely controlled 'dead man' hand release wheel
- ▶ High push/pull handlebar
- ▶ Fitted with overload valve and parking brake as standard
- ▶ Polyurethane tyres and swivel wheels
- ▶ Suitable for steel drums

MODEL	WRDTR250
CAPACITY (KG)	250
LIFT HEIGHT (MM)	250
MAXIMUM DRUM HEIGHT (MM)	1180
MINIMUM DRUM HEIGHT (MM)	910
DRUM DIAMETER (MM)	572
INSIDE STRADDLE (MM)	850
OUTSIDE O/A STRADDLE (MM)	980
NET WEIGHT (KG)	50



WARRIOR Drum Porter Plus

Suitable for handling 140 or 210-litre drums on and off Euro pallets.

- ▶ Manual hydraulic operation by foot-operated pump unit
- ▶ Infinitely controlled 'dead man' hand release wheel
- ▶ High push/pull handlebar
- ▶ Fitted with overload valve and parking brake as standard
- ▶ Polyurethane tyres and swivel wheels
- ▶ Suitable for steel and plastic drums

MODEL	WRDTF450
CAPACITY (KG)	450
LIFT HEIGHT (MM)	500
MAXIMUM HEIGHT IN LOWERED POSITION (MM)	1250
MAXIMUM HEIGHT IN RAISED POSITION (MM)	1380
MAXIMUM DRUM DIAMETER (MM)	572
MAXIMUM DRUM HEIGHT (MM)	915
LIFTING PER STROKE (MM)	12
OVERALL LENGTH (MM)	900
OVERALL WIDTH (MM)	1020
NET WEIGHT (KG)	165

For Steel & Plastic Drums



WARRIOR CE

WARRIOR Straddle-Leg Drum Truck

Suitable for handling 140 or 210-litre drums on and off Euro pallets.

- ▶ Straddled legs for mounting drums onto Euro pallets
- ▶ Ideal for lifting and transporting drums with a top lip
- ▶ Spring-loaded steel jaws for ultimate drum grip

MODEL	WRDTW250
CAPACITY (KG)	250
LIFT HEIGHT (MM)	345
LIFT PER STROKE (MM)	22
DRUM SIZE	572MM (22.5" DIAMETER), 210 LITRES
NET WEIGHT (KG)	45

WARRIOR CE



WARRIOR Steel and Plastic Drum Tippler

Engineered to handle both steel and plastic drums, the **WARRIOR STEEL AND PLASTIC DRUM TIPPLER** will prove transformative to your fleet. Convert your forklift trucks into drum handlers with a user-friendly, durable attachment, designed to maximise their capabilities.

From tipping and pouring to transportation, this attachment is perfect for streamlining your drum handling operations with a single purchase.

Plastic Drum



Drums held in place by over-centre clamp

Steel Drum



- ▶ Hand wheel and gearbox tipping
- ▶ 30:1 ratio gearbox to prevent gravity roll
- ▶ Fork-mounted

MODEL	WRHK285C
CAPACITY (KG)	300
FORK POCKETS (MM)	55 x 150
FORK SPREAD (MM)	575
OVERALL WIDTH (MM)	980
DISTANCE BETWEEN FORK POCKETS (MM)	620
NET WEIGHT (KG)	60

WARRIOR CE



WARRIOR Automatic Fork-Mounted Drum Clamps

WARRIOR AUTOMATIC DRUM CLAMPS are easily fitted to your forklift truck's forks using hand screws, offering automatic pick-up, transport and drop-off from the comfort of the cab. The drums are held in place by their own weight, and the arms loosen when the load is deposited on the ground, sliding away seamlessly.

Available in double and single steel drum configurations, as well as the WRDG50 for single plastic drums.

MODEL	WRDG10	WRDG20	WRDG40	WRDG50
CAPACITY (KG)	680	680	680	453
FORK POCKETS (MM)	51 x 140	57 x 178	57 x 178	38 x 137
FORK POCKET LENGTH (MM)	610	610	610	610
DRUM CONFIGURATION	SINGLE STEEL DRUM	DOUBLE STEEL DRUM	ADJUSTABLE, STEEL/ PLASTIC DRUM	ADJUSTABLE, SINGLE PLASTIC DRUM
NET WEIGHT (KG)	54	89	56	18



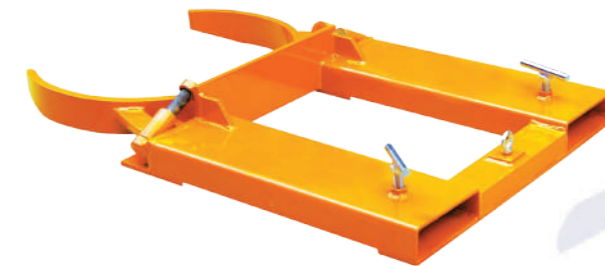
WRDG20 – Steel Drums



WRDG10 – Steel Drum



WRDG50 – Plastic Drum



WRDG40 – Steel and XL Plastic Drum

WARRIOR



WARRIOR Drum Tipper

The **WARRIOR DRUM TIPPER** is suitable for **both steel and plastic drums**, and enables an operator to perform drum handling tasks safely at height. Lift is performed hydraulically by a handle/pedal combination, and rotation is undertaken via a hand wheel.

Drum rollback is prevented by a 30:1 ratio transfer box, ensuring a safe, efficient operation.

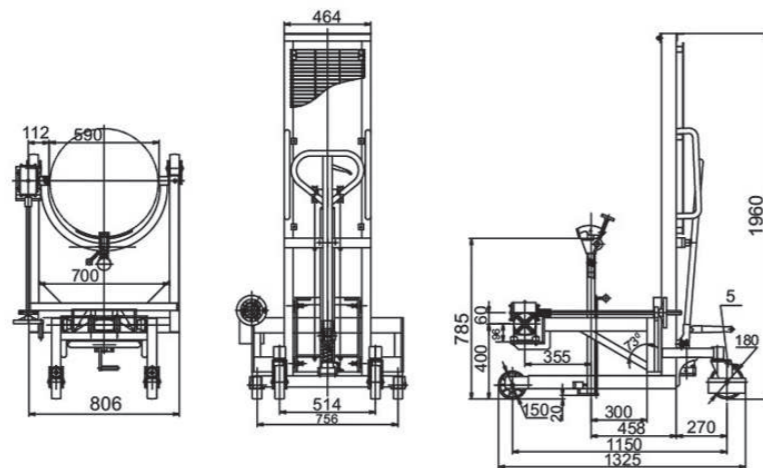
- ▶ Auto-overload protection fitted
- ▶ Tandem liftchains
- ▶ Lockable in vertical and horizontal positions
- ▶ Manually operated
- ▶ Position for draining through a faucet



WRDTPL45

MODEL	WRDTPL45
CAPACITY (KG)	450
MAXIMUM LIFT HEIGHT (MM)	1500
DRUM TYPE	STEEL, PLASTIC
LOAD ROLLERS SIZE (MM)	Ø150 x 50
STEERING WHEEL SIZE (MM)	Ø150 x 50
STRADDLE WIDTH (INSIDE/OUTSIDE) (MM)	630/810
LEG LENGTH (MM)	770
OVERALL DIMENSIONS (MM)	1400 x 1000 x 2100
NET WEIGHT (KG)	185

WARRIOR CE



Scan For Video

WARRIOR Fork Extensions

Maximise your fleet's capabilities with our range of **WARRIOR FORK EXTENSIONS**, perfect for handling larger loads safely without damage. These are designed to fit forks up to 50mm thick, and are manufactured from heavy-duty steel to ensure high durability. Slipping is prevented by steel retainers.



WREX726

Please note – we recommend that you check with the manufacturer of your trucks about their capabilities when lifting at an extended load centre. **Fork extensions should not exceed the length of the fork to which they are fitted by more than 40%.**

MODEL	EXTENSION LENGTH (MM)	SUIT FORK WIDTH (MM)	WEIGHT PER PAIR (KG)
WREX604	1525	100	44
WREX605	1525	125	49
WREX724	1830	100	53
WREX725	1830	125	59
WREX726	1830	150	64
WREX824	2085	100	60
WREX825	2085	125	67
WREX826	2085	150	70
WREX964	2435	100	70
WREX965	2435	125	79
WREX966	2435	150	85

WARRIOR

Counterbalanced Cranes



NATIONAL DISTRIBUTOR, LOCAL SERVICE

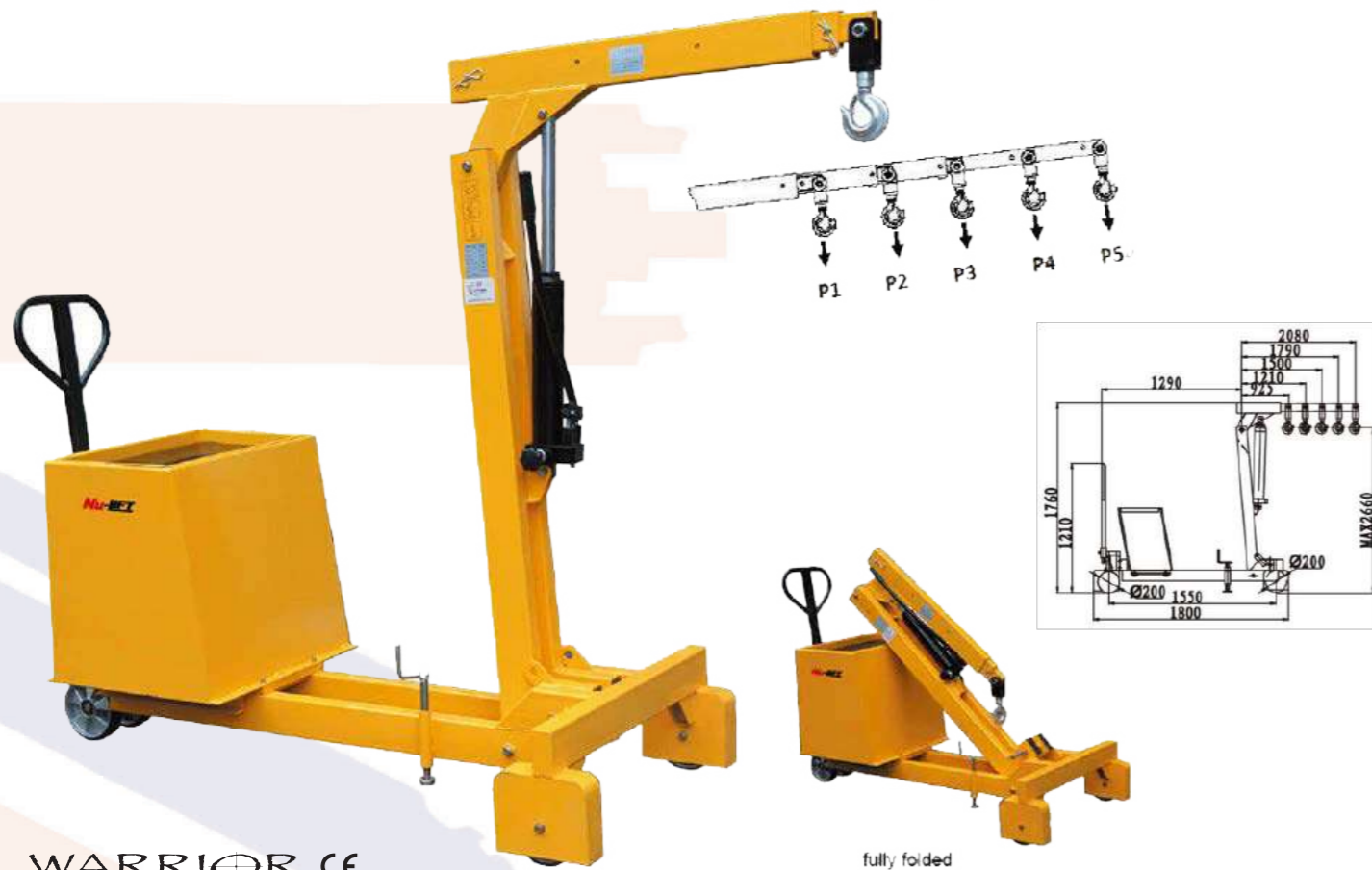
WARRIOR Manual Counterbalanced Crane

The **WARRIOR HEAVY-DUTY MANUAL COUNTERBALANCED WORKSHOP CRANE** offers 5 variable capacity settings, with a 5-position telescopic jib and sturdy swivel hook with safety catch. This crane is entirely freestanding, with exceptional manoeuvrability to suit a fast-paced operation.

MODEL	WRTSB550
CAPACITY AT MAXIMUM JIB (KG)	350
CAPACITY AT JIB POSITION 4 (KG)	400
CAPACITY AT JIB POSITION 3 (KG)	450
CAPACITY AT JIB POSITION 2 (KG)	500
CAPACITY AT MINIMUM JIB (KG)	550
OVERALL LENGTH (MM)	2100
OVERALL WIDTH (MM)	1050
OVERALL HEIGHT (MM)	1760
OVERALL HEIGHT FOLDED (MM)	870
NET WEIGHT (KG)	500

SUPPLIED COMPLETE WITH COUNTERBALANCE!

- ▶ Up to 550kg capacity
- ▶ Double-acting hand hydraulic pump unit
- ▶ Pressure relief valve to prevent overloading
- ▶ Counterbalance allows positioning right up to the load



Counterbalanced Cranes



NATIONAL DISTRIBUTOR, LOCAL SERVICE

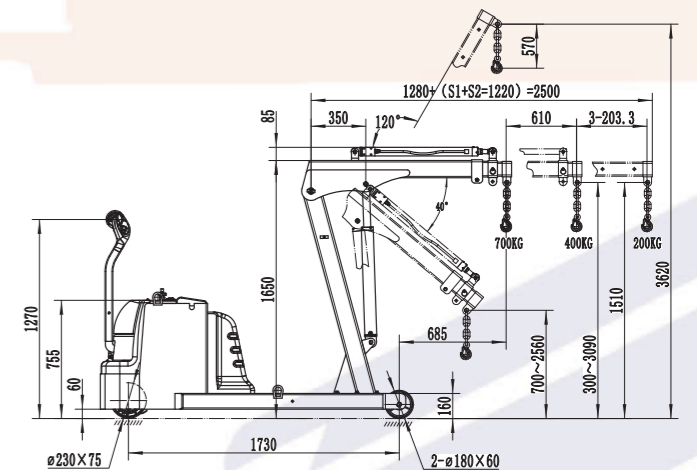
WARRIOR Pedestrian-Operated Powered Counterbalanced Floor Crane

For those tougher tasks, enlist a compact, heavy-duty solution to get the job done. The **WARRIOR PEDESTRIAN-OPERATED POWERED COUNTERBALANCED FLOOR CRANE** will tackle up to 700kg, featuring a powered drive for easy manoeuvring in congested areas.

What's more, this crane includes an on-board battery charger for convenience, and a hydraulic boom with manual third section for precise lifting.

- ▶ Up to 700kg capacity
- ▶ Pendant control, allowing you to stand next to the load
- ▶ Integral battery charger
- ▶ 600mm extension

MODEL	WRPDCB700
OVERALL HEIGHT (MM)	1670
OVERALL WIDTH (MM)	763
CAPACITY RANGE (KG)	200-700
MAXIMUM HOOK HEIGHT (MM)	3300
MAXIMUM REACH (MM)	2322
NET WEIGHT (KG)	650
BATTERY	24V/70AH



Counterbalanced Cranes



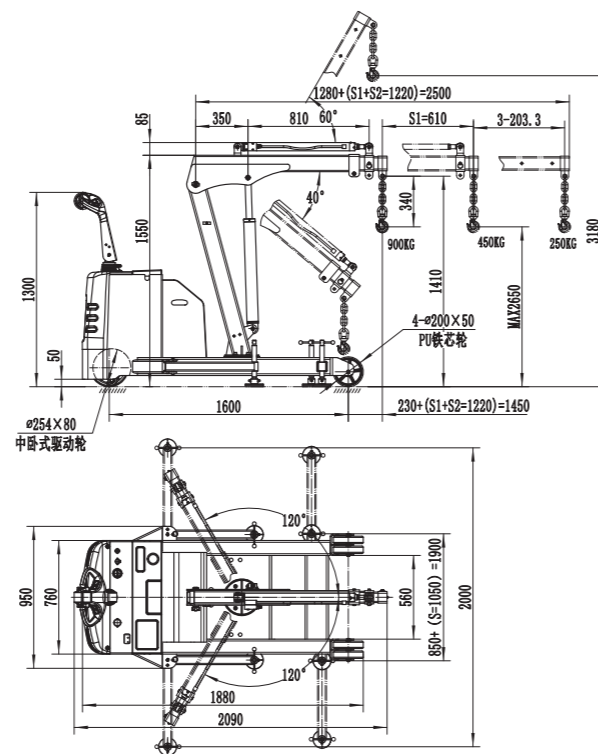
NATIONAL DISTRIBUTOR, LOCAL SERVICE

WARRIOR Electric Slewing Fully Powered Counterbalanced Workshop Crane

The **WARRIOR FULL-ELECTRIC FULLY POWERED COUNTERBALANCED WORKSHOP CRANE WITH SLEWING JIB** is designed for smooth, precise lifting of loads up to 900kg. Its 360° slewing jib and built-in ballast weight enables maximum accessibility, as well as the flexibility to cater to a variety of lifting applications.

- ▶ Up to 900kg capacity
- ▶ Key switch voltmeter
- ▶ Emergency stop button and lockable rotation
- ▶ Load gradability: 5%
- ▶ Unload gradability: 10%
- ▶ Fully charged in 8 hours
- ▶ Ideal for confined gangways
- ▶ Two 12V/120Ah gel batteries and 24V/15Ah built-in charger

MODEL	WRPDCB900SJ
CAPACITY AT JIB POSITION 1(KG)	900
CAPACITY AT JIB POSITION 2(KG)	450
CAPACITY AT JIB POSITION 3(KG)	250
LIFT HEIGHT (MM)	3180
HANDLE HEIGHT (MM)	1300
WHEEL BASE (MM)	1600
OVERALL LENGTH (MM)	2090
OVERALL WIDTH (MM)	950
OVERALL HEIGHT (MM)	1550
BATTERIES	2X 12V/120AH
DRIVE SPEED (LOADED/UNLOADED)	4.0/4.5KM PER HOUR
DRIVE MOTOR	24V/1000W
LIFT MOTOR	245V/2000W



WARRIOR CE

Counterbalanced Cranes



NATIONAL DISTRIBUTOR, LOCAL SERVICE

WARRIOR Semi-Electric Rotating Counterbalanced Workshop Crane

With a 360° manually slewing jib, the **WARRIOR 550KG SEMI-ELECTRIC ROTATING COUNTERBALANCED WORKSHOP CRANE** features a five-function hydraulic distributor, allowing for smooth and adjustable jib lifting. This machine is supplied with a built-in ballast weight, mounted on a precision-engineered slewing ring for maximum accessibility.

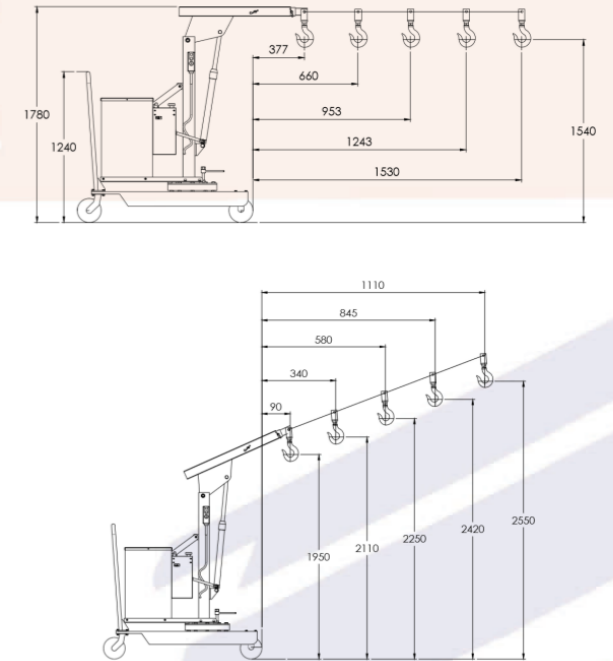
Plus, this model's mobility is ideal for sites requiring scope for layout changes.

- ▶ Up to 550kg capacity
- ▶ Includes key switch, voltmeter and emergency stop button
- ▶ Lockable rotation
- ▶ 5 variable capacity settings
- ▶ 10 hours to full charge
- ▶ Turning radius from 977-2140mm

MODEL	WRRSSCB550
CAPACITY AT 2600MM (KG)	150
CAPACITY AT 2450MM (KG)	250
CAPACITY AT 2260MM (KG)	350
CAPACITY AT 2160MM (KG)	450
CAPACITY AT 1900MM (KG)	550
OVERALL LENGTH (MM)	1430
OVERALL WIDTH (MM)	995
OVERALL HEIGHT (MM)	1630
BATTERY	12V/80AH
CHARGER	12V/8AH
NET WEIGHT (KG)	662
MOTOR	0.8KW
WHEEL DIAMETER (MM)	200



WARRIOR CE



WARRIOR Heavy-Duty Semi-Electric Counterbalanced Workshop Crane

Featuring a five-position telescopic jib, the **WARRIOR HEAVY-DUTY SEMI-ELECTRIC COUNTERBALANCED WORKSHOP CRANE** provides 5 variable capacity settings to suit any lifting application. Discover ultimate flexibility with easy powered lifting, with the chance to manually move the load wherever required. The best of both worlds!

Plus, this model's mobility is ideal for sites requiring scope for layout changes.

- ▶ Up to 550kg capacity
- ▶ Pressure relief valve to prevent overloading
- ▶ Heavy-duty swivel hook with safety catch
- ▶ Counterbalance offering total jib access
- ▶ CE Marked
- ▶ Manually propelled
- ▶ Electrohydraulic lift
- ▶ 12V/80Ah lead acid battery and external 12V/8Ah charger

MODEL	WRSETSBS50
CAPACITY AT 2080MM (KG)	150
CAPACITY AT 1800MM (KG)	220
CAPACITY AT 1500MM (KG)	300
CAPACITY AT 1210MM (KG)	400
CAPACITY AT 925MM (KG)	550
CHASSIS LENGTH (MM)	1650
OVERALL WIDTH (MM)	910
OVERALL HEIGHT (MM)	1510
BATTERY	12V/60AH
NET WEIGHT (KG)	662
MAXIMUM LIFT HEIGHT (MM)	2600



WARRIOR CE

WARRIOR Electric Order Picker

Reduce the risk of strain and injury with the **WARRIOR ELECTRIC ORDER PICKER**. Designed for easy manoeuvring and supplied with battery and automatic charger, this order picker is a safe, simple solution for any modern operation.

- ▶ Up to 200kg total capacity
- ▶ Mandatory two-handed controls
- ▶ Two parking brakes for ensured safety
- ▶ Conforms to EN280

MODEL	WRWF200A
CAPACITY (KG)	200
RAISED TABLE HEIGHT (MM)	1500
LOWERED TABLE HEIGHT (MM)	670
PLATFORM SIZE (MM)	600 x 550
OVERALL LENGTH (MM)	1210
OVERALL WIDTH (MM)	630
OVERALL HEIGHT (MM)	1040
BATTERY	12V/45AH
NET WEIGHT (KG)	151



Safety Bar



“MOBILE STEPS ARE HISTORY!”

EP EFL201 – Li-ion Electric Forklift Truck (2.0T)



More information

- ▶ Durability of an IC truck, combined with an 80V lithium heart
- ▶ High ground clearance of 120mm and waterproof design
- ▶ Enhanced visibility and comfort, with clear view mast, adjustable steering wheel and a large workspace
- ▶ 12kW of power
- ▶ 3-4 hours of nonstop work
- ▶ Opportunity charging – short intervals, wherever convenient!



MANUFACTURER			EP
MODEL DESIGNATION			EFL201
DRIVE UNIT			Li-ion
LOAD CENTER DISTANCE	C	MM	500
SERVICE WEIGHT		KG	3137
HEIGHT, MAST LOWERED	H1	MM	2020
LIFT HEIGHT	H3	MM	4800
HEIGHT, MAST EXTENDED	H4	MM	4028
LENGTH TO FACE OF FORKS	L2	MM	2272
OVERALL WIDTH	B1/B2	MM	1080
FORK DIMENSIONS	S/E/I	MM	40x122x1150
TURNING RADIUS	WA	MM	2100
TRAVEL SPEED, LADEN/UNLADEN		KM/H	11/14
LIFTING SPEED, LADEN/UNLADEN		M/S	0.25/ 0.3
LOWERING SPEED, LADEN/UNLADEN		M/S	0.43/ 0.45
MAX. GRADEABILITY, LADEN/UNLADEN		%	12/15
DRIVE MOTOR RATING S2 60 MIN		KW	6
BATTERY VOLTAGE/NOMINAL CAPACITY		V/AH	80/150

- Full Free Lift
- Side Shift
- Standard forklift trucks are container spec!



EP EFL252X2 – Electric Counterbalance Forklift Truck (2.5T)



More information

- ▶ Cost-effective, entry-level solution
- ▶ Longer battery life and consistent power output
- ▶ Suitable for light-duty and occasional heavy load applications, both inside and outdoors
- ▶ Low-maintenance battery, with single phase on-board charger
- ▶ 12kW of power
- ▶ 3-4 hours of nonstop work
- ▶ Opportunity charging – short intervals, wherever convenient!



MANUFACTURER			EP
MODEL DESIGNATION			EFL252X2
DRIVE UNIT			Li-ion
LOAD CAPACITY	Q	KG	2500
LOAD CENTER DISTANCE	C	MM	500
SERVICE WEIGHT		KG	4116
RETRACTED MAST HEIGHT	H1	MM	2090
LIFT HEIGHT	H3	MM	4800
HEIGHT, MAST EXTENDED	H4	MM	4025
LENGTH TO FACE OF FORKS	L2	MM	2528
OVERALL WIDTH	B1/B2	MM	1154
FORK DIMENSIONS	S/E/I	MM	40x122x1150
TURNING RADIUS	WA	MM	2258
TRAVEL SPEED, LADEN/UNLADEN		KM/H	11/12
LIFTING SPEED, LADEN/UNLADEN		M/S	0.29/0.36
LOWERING SPEED, LADEN/UNLADEN		M/S	0.4/0.43
MAX. GRADEABILITY, LADEN/UNLADEN		%	15/15
DRIVE MOTOR RATING S2 60 MIN		KW	8
BATTERY VOLTAGE/NOMINAL CAPACITY		V/AH	80/150

- Full Free Lift
- Side Shift
- Standard forklift trucks are container spec!



EP CPD15/18/20TVL – Li-ion Three-Wheel Counterbalance Forklift (1.5T, 1.8T, 2.0T)

- ▶ Compact size
- ▶ 80V 2*5kW dual drive motors
- ▶ Generous legroom
- ▶ Supported by opportunity charging
- ▶ Zero emissions
- ▶ 12kW of power
- ▶ 3-4 hours of nonstop work
- ▶ Opportunity charging – short intervals, wherever convenient!

MANUFACTURER		EP	EP	EP
MODEL DESIGNATION		CPD15TVL	CPD18TVL	CPD20TVL
DRIVE UNIT		Li-ion	Li-ion	Li-ion
LOAD CAPACITY	Q KG	1500	1800	2000
LOAD CENTER DISTANCE	C MM	500	500	500
SERVICE WEIGHT	KG	2950	3269	3429
RETRACTED MAST HEIGHT	H1 MM	2075	2075	2075
LIFT HEIGHT	H3 MM	4800	4800	4800
HEIGHT, MAST EXTENDED	H4 MM	4055	4055	4055
LENGTH TO FACE OF FORKS	L2 MM	1813	1913	1950
OVERALL WIDTH	B1/B2 MM	1150	1150	1170
FORK DIMENSIONS	S/E/l MM	40/100/1150	40/100/1150	40/122/1150
TURNING RADIUS	WA MM	1450	1550	1585
TRAVEL SPEED, LADEN/UNLADEN	KM/H	13/14	13/14	13/14
LIFTING SPEED, LADEN/UNLADEN	M/S	0.33/0.45	0.33/0.45	0.3/0.4
LOWERING SPEED, LADEN/UNLADEN	M/S	0.4/0.44	0.4/0.44	0.38/0.4
MAX. GRADEABILITY, LADEN/UNLADEN	%	10/15	10/15	10/15
DRIVE MOTOR RATING S2 60 MIN	KW	5.0*2	5.0*2	5.0*2
BATTERY VOLTAGE/NOMINAL CAPACITY	V/AH	80/150	80/205	80/205

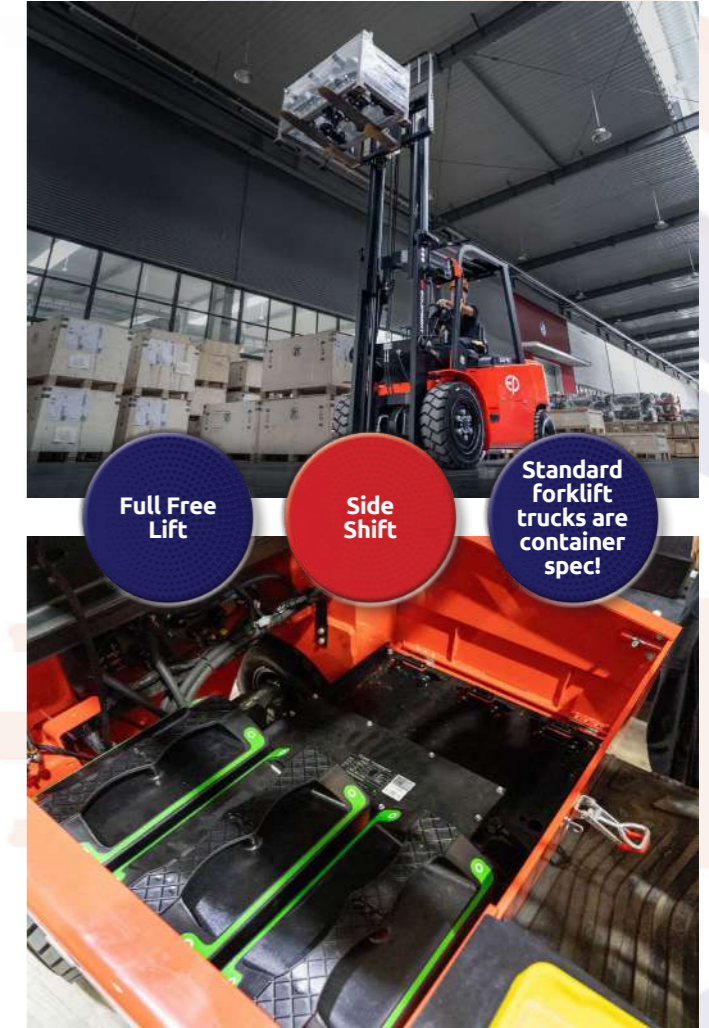


EP EFL302X4 – Li-ion Electric Forklift (3.0T)

With interchangeable EP battery packs for longevity

- ▶ Innovative plug-and-play battery solution, for quick, tool-free power swaps
- ▶ Ideal for locations where on-site charging is limited, and supports 24/7 operation
- ▶ Fantastic 3000kg capacity
- ▶ Scalable with your business, catering to various requirements
- ▶ 12kW of power
- ▶ 3-4 hours of nonstop work
- ▶ Opportunity charging – short intervals, wherever convenient!

MANUFACTURER		EP
MODEL DESIGNATION		EFL302X4
DRIVE UNIT		Li-ion
LOAD CAPACITY	Q KG	3000
LOAD CENTER DISTANCE	C MM	500
SERVICE WEIGHT	KG	4354
RETRACTED MAST HEIGHT	H1 MM	2070
LIFT HEIGHT	H3 MM	4800
HEIGHT, MAST EXTENDED	H4 MM	4096
LENGTH TO FACE OF FORKS	L2 MM	2665
OVERALL WIDTH	B1/B2 MM	1228
FORK DIMENSIONS	S/E/l MM	45/122/1150
TURNING RADIUS	WA MM	2428
TRAVEL SPEED, LADEN/UNLADEN	KM/H	11/12
LIFTING SPEED, LADEN/UNLADEN	M/S	0.29/0.36
LOWERING SPEED, LADEN/UNLADEN	M/S	0.4/0.4
MAX. GRADEABILITY, LADEN/UNLADEN	%	15/15
DRIVE MOTOR RATING S2 60 MIN	KW	8
BATTERY VOLTAGE/NOMINAL CAPACITY	V/AH	80V100AH



EP EFL253/303/353 – Li-ion Yard Forklift Truck (2.5T, 3.0T, 3.5T)

- ▶ Unmatched versatility and robust design
- ▶ Perfect for arduous applications
- ▶ Overhead guard for easy cabin installation, offering flexibility
- ▶ Reliability enriched by mature components
- ▶ Battery options between 16-45kW
- ▶ 12kW of power
- ▶ 3-4 hours of nonstop work
- ▶ Opportunity charging – short intervals, wherever convenient!

MANUFACTURER			EP	EP	EP
MODEL DESIGNATION			EFL253	EFL303	EFL353
DRIVE			Li-ion	Li-ion	Li-ion
LOAD CAPACITY	Q	KG	2500	3000	3500
LOAD CENTRE DISTANCE	C	MM	500	500	500
SERVICE WEIGHT		KG	3780	4280	4570
RETRACTED MAST HEIGHT	H1	MM	2090	2070	2070
LIFT HEIGHT	H3	MM	4800	4800	4800
HEIGHT, MAST EXTENDED	H4	MM	4025	4095	4095
LENGTH TO FACE OF FORKS	L2	MM	2530	2540	2618
OVERALL WIDTH	B1/B2	MM	1154	1210	1210
FORK DIMENSIONS	S/E/L	MM	40/122/1150	45/122/1150	50/122/1150
TURNING RADIUS	WA	MM	2305	2347	2405
TRAVEL SPEED, LADEN/UNLADEN		KM/H	11/12	11/12	11/12
LIFTING SPEED, LADEN/UNLADEN		M/S	0.29/0.36	0.29/0.36	0.28/0.36
LOWERING SPEED, LADEN/UNLADEN		M/S	0.43/0.44	0.43/0.44	0.43/0.44
MAX. GRADEABILITY, LADEN/UNLADEN		%	15/15	15/15	15/15
DRIVE MOTOR RATING S2 60 MIN		KW	10	10	10
BATTERY VOLTAGE/NOMINAL CAPACITY	V/AH		80V/205AH	80V/205AH	80V/280AH



- Full Free Lift
- Side Shift
- Standard forklift trucks are container spec!



EP EFLXZ301 – Remanufactured Electric Forklift Truck (3.0T)



Used **Internal Combustion (IC) Forklifts** are recycled with EP ingenuity, given a second life as cost-effective, sustainable Li-ion trucks.

“
ULTIMATE SOLUTION
TO REDUCING YOUR
CARBON FOOTPRINT

- ▶ Disassembly of used IC forklifts, and critical parts such as the chassis, counterweight and front axle are preserved to be recycled
- ▶ Inspection of every component and part, ensuring their suitability for remanufacture
- ▶ Shot blasting and painting of parts, ensuring they are clean and meet operational standards
- ▶ Re-assembly of the truck, using remanufactured parts from EP’s market-proven models for ultimate durability
- ▶ Rigorous testing and quality control to ensure safety, reliability and performance

- ▶ Refreshed appearance
- ▶ Same EP quality and lifespan, including the same warranty as a new truck

MANUFACTURER			EP	EP
MODEL DESIGNATION			EFXZ301-H	EFXZ301-E
DRIVE			Li-ion	Li-ion
LOAD CAPACITY	Q	KG	3000	3000
LOAD CENTRE DISTANCE	C	MM	500	500
SERVICE WEIGHT		KG	4200	4110
RETRACTED MAST HEIGHT	H1	MM	2100	2100
LIFT HEIGHT	H3	MM	3000	3000
HEIGHT, MAST EXTENDED	H4	MM	4110	4110
LENGTH TO FACE OF FORKS	L2	MM	2690	2660
OVERALL WIDTH	B1/B2	MM	1225	1225
FORK DIMENSIONS	S/E/L	MM	45/122/1150	45/122/1150
TURNING RADIUS	WA	MM	2400	2340
TRAVEL SPEED, LADEN/UNLADEN		KM/H	11/12	11/12
LIFTING SPEED, LADEN/UNLADEN		M/S	0.26/0.36	0.26/0.36
LOWERING SPEED, LADEN/UNLADEN		M/S	0.4/0.43	0.4/0.43
MAX. GRADEABILITY, LADEN/UNLADEN		%	15/24	15/24
DRIVE MOTOR RATING S2 60 MIN		KW	10	10
BATTERY VOLTAGE/NOMINAL CAPACITY	V/AH		80V280AH	80V280AH

- Full Free Lift
- Side Shift
- Standard forklift trucks are container spec!



EFXZ-201-H



EFXZ-201-E



Forklift Trucks



NATIONAL DISTRIBUTOR, LOCAL SERVICE

EP CPD50L1 – Li-ion Counterbalance Forklift (5.0T)



More information

- ▶ Heavy-duty applications
- ▶ Powerful 80V/560Ah Li-ion battery
- ▶ Shorter length to face of forks at 2900mm
- ▶ Tight turning radius of 2675mm
- ▶ Bolted overhead guard for added flexibility
- ▶ Fast travel speeds
- ▶ 12kW of power
- ▶ 3-4 hours of nonstop work
- ▶ Opportunity charging – short intervals, wherever convenient!

MANUFACTURER			EP
MODEL DESIGNATION			CPD50L1
DRIVE UNIT			Li-ion
LOAD CAPACITY	Q	KG	5000
LOAD CENTER DISTANCE	C	MM	500
SERVICE WEIGHT		KG	7000
RETRACTED MAST HEIGHT	H1	MM	2230
LIFT HEIGHT	H3	MM	4700
HEIGHT, MAST EXTENDED	H4	MM	4175
LENGTH TO FACE OF FORKS	L2	MM	2900
OVERALL WIDTH	B1/B2	MM	1550
FORK DIMENSIONS	S/E/I	MM	55/150/1150
TURNING RADIUS	WA	MM	2675
TRAVEL SPEED, LADEN/UNLADEN		KM/H	16/18
LIFTING SPEED, LADEN/UNLADEN		M/S	0.3/0.46
LOWERING SPEED, LADEN/UNLADEN		M/S	0.45/0.51
MAX. GRADEABILITY, LADEN/UNLADEN		%	15/20
DRIVE MOTOR RATING S2 60 MIN		KW	18
BATTERY VOLTAGE/NOMINAL CAPACITY		V/AH	80/560



- Full Free Lift
- Side Shift
- Standard forklift trucks are container spec!

Li-ion Pallet Trucks



NATIONAL DISTRIBUTOR, LOCAL SERVICE

EP F4 – Li-ion Pallet Truck (1.5T)



More information

- ▶ Innovative two-battery configuration, offering ultimate flexibility for both occasional use and long shift work
- ▶ Optimised packaging design, offering 30-40% savings on shipping
- ▶ 12kW of power
- ▶ 3-4 hours of nonstop work
- ▶ Opportunity charging – short intervals, wherever convenient!



Load Capacity: 1500kg
Please get in touch for full specification



NEW

EP WPL202 – Li-ion Electric Pedestrian Pallet Truck (2.0T)



More information

- ▶ Ultra-slim design, with a short chassis length and a turning radius of just 1320mm
- ▶ Improved castor wheels for increased stability on uneven terrain and ramps
- ▶ Low freight cost with two units to a box, cutting costs by up to 50%
- ▶ 12kW of power
- ▶ 3-4 hours of nonstop work
- ▶ Opportunity charging – short intervals, wherever convenient!

Load Capacity: 2000kg
Please get in touch for full specification



EP RPL201 – Li-ion Ride-On Pallet Truck (2.0T)



More Information

Load Capacity: 2000kg
Please get in touch for full specification



- ▶ Sturdy construction, featuring strengthened steel safety arms for longevity
- ▶ Quick charge times, with up to 7% power in just 10 minutes!
- ▶ Improved travel times for speedy operation
- ▶ 12kW of power
- ▶ 3-4 hours of nonstop work
- ▶ Opportunity charging – short intervals, wherever convenient!



EP ESL122 – Li-ion Electric Pallet Stacker (1.2T)



More Information

Load Capacity: 1200kg
Lift Height: 2930mm
Please get in touch for full specification

Lift Height Options Available



- ▶ Robust chassis and mast design for improved stability
- ▶ Cost-effective
- ▶ Nimble manoeuvrability in tight spaces
- ▶ Efficient hydraulics for reduced noise and increased durability
- ▶ 12kW of power
- ▶ 3-4 hours of nonstop work
- ▶ Opportunity charging – short intervals, wherever convenient!



EP WSA161 – Li-ion Heavy-Duty Electric Pallet Stacker (1.6T)



More Information

Load Capacity: 1600kg
Lift Height: 2915mm
Please get in touch for full specification

Lift Height Options Available

Suitable for Euro Pallets



- ▶ Delivers high-speed lifting and lowering for improved efficiency
- ▶ Proportional lifting system for precise handling, and a compact design for tight spaces
- ▶ Minimal maintenance requirements and high availability with opportunity charging
- ▶ 12kW of power
- ▶ 3-4 hours of nonstop work
- ▶ Opportunity charging – short intervals, wherever convenient!



EP ESA121-D – Li-ion Electric Pedestrian Straddle Stacker (1.2T)



More Information

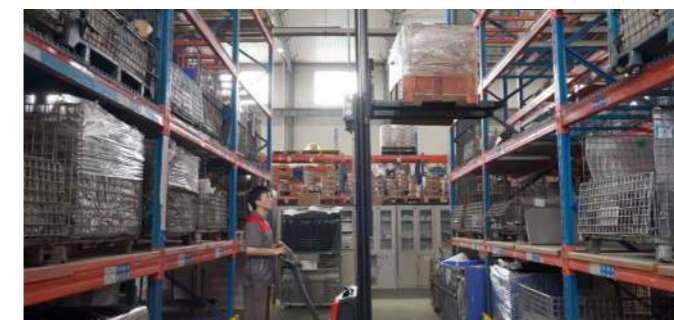
Load Capacity: 1200kg
Lift Height: 3730mm
Please get in touch for full specification

Lift Height Options Available

Adjustable Straddle and Forks



- ▶ Soft landing forks for safe handling of fragile loads
- ▶ Quiet operation
- ▶ Quick and easy fork adjustment for ultimate flexibility
- ▶ 12kW of power
- ▶ 3-4 hours of nonstop work
- ▶ Opportunity charging – short intervals, wherever convenient!



EP RSC082/122/152 – Li-ion Ride-On Counterbalanced Pallet Stacker (0.8T, 1.2T, 1.5T)

- ▶ Features a proportional lifting system for gentle, precise handling
- ▶ Suitable even for special and non-standard pallet sizes
- ▶ Advanced mobility features, including a high ground clearance of 116mm and sensitive mast tilting
- ▶ 12kW of power
- ▶ 3-4 hours of nonstop work
- ▶ Opportunity charging – short intervals, wherever convenient!



Load Capacity: from 800-1500kg
Lift Height: 3000mm
Please get in touch for full specification

Lift Height Options Available



More information

EP CQE15S – Li-ion Ride-On Reach Truck (1.5T)

- ▶ Powered by Li-ion innovation
- ▶ Reaching mast
- ▶ 24V/280Ah battery
- ▶ Automatically slow-down speed
- ▶ Easy service access
- ▶ Low-noise hydraulic system
- ▶ 12kW of power
- ▶ 3-4 hours of nonstop work
- ▶ Opportunity charging – short intervals, wherever convenient!



Load Capacity: up to 1500kg
Lift Height: 3200mm
Please get in touch for full specification

Lift Height Options Available



More information



EP CQD14/16/20LB – Li-ion Reach Truck (1.4T, 1.6T, 2.0T)

- ▶ Powered by Li-ion innovation
- ▶ Easy maintenance through quick seat compartment movement
- ▶ Multi-functional configuration
- ▶ High efficiency with quick lifting/lowering speeds, and a reach distance of 610mm
- ▶ Enhanced mast for improved visibility
- ▶ 12kW of power
- ▶ 3-4 hours of nonstop work
- ▶ Opportunity charging – short intervals, wherever convenient!



Load Capacity: up to 2000kg
Lift Height: 9500mm
Please get in touch for full specification



More information

EP Equipment Cobots

EP EXP15 Autonomous Mobile Robot (AMR)

- ▶ Entry-level AMR technology at your fingertips
- ▶ Plug-in battery to hit the ground running – no Wi-Fi or software setup required
- ▶ Minimal service requirements, meaning reduced downtime and costs



More information



EP JX0 – Li-ion Small-Volume Order Picker

- ▶ User-friendly conventional steering wheel and intuitive interface
- ▶ Comfortable platform, minimising strain on operators and offering more storage space
- ▶ Electric lifting platform, and all functions can be completed single-handedly
- ▶ 12kW of power
- ▶ 3-4 hours of nonstop work
- ▶ Opportunity charging – short intervals, wherever convenient!

Load Capacity: up to 138kg
Lift Height: 3615mm
Please get in touch for full specification



More information



EP JX1 – Li-ion High-Volume Order Picker

- ▶ Total capacity of 500kg
- ▶ Electronic powered steering, including variable speed control
- ▶ Robust construction, comprised of a premium steel I-beam mast and steel frame
- ▶ 12kW of power
- ▶ 3-4 hours of nonstop work
- ▶ Opportunity charging – short intervals, wherever convenient!

Load Capacity: 363kg
Lift Height: up to 5710mm
Please get in touch for full specification



More information



ABOUT US

We are a family-run company, based in the heart of the West Midlands. Our team of experts are dedicated to supplying industry-leading equipment and service to the United Kingdom and beyond – but we're not just about selling trucks.

As our client, we will work to build a lasting relationship with you and your team, supporting you towards streamlining your operations and making daily tasks that little bit smoother. Plus, with our growing range of lithium-ion machines, we're on a mission to provide sustainable solutions for businesses nationwide.

Unparalleled quality, excellent service and a product range that is kinder to your wallet, your team and our planet.

Let's handle it together!



AFTERSALES AND SERVICE

When you choose to buy from us, you're not just purchasing a new machine.

We are committed to providing stellar aftersales care to maximise your fleet's service life and capabilities. Our dedicated service department are on hand to undertake any maintenance and repair – just a phone call away!

At our West Midlands head office, we carry a comprehensive range of parts in our stock, suited to every model in our portfolio. Plus, where we can, we use our fantastic team of engineers to help you keep your machines in excellent working order.

We also provide LOLERS, contract hire and lease purchase services.

Repairs, maintenance or even just a check-up – we've got you covered!





All of our products are covered by our no-nonsense 12-month warranty. A whole year of parts and labour at no extra cost.

Plus, every lithium-powered forklift truck is supplied with our industry-leading **753 warranty**.

- ▶ **7-year coverage** for your batteries
- ▶ **5-year coverage** for major parts, including the motors, chassis and mast frame and controller
- ▶ **3-year coverage** for minor parts, such as sensors, pedals, axles and more

For our full warranty policy, please get in touch or visit our website.

01384 423330 | www.handlingequipment.co.uk



Looking for something else? Call our main office on **01384 423330**, and we'd be delighted to help you.



All of our products have at least 12 months onsite parts and labour warranty



WARRIOR CE